

PLEASURE PARADOX PRODUCT GUIDE



Fashionable and Functional;
Quality leather work for the Adult,
Gothic, and Theatrical Communities

Submissive
Reaction



BALL GAG SYSTEM
Recommended Sizing Guide

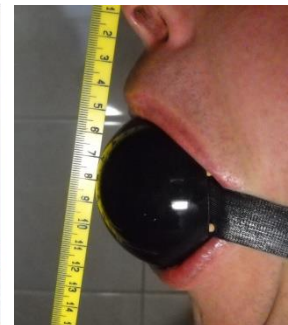
1.0	1.125	1.25
1.375	1.5	1.625
1.75	1.875	2.0
2.125	2.25	2.375
2.5	2.625	2.75
2.875	3.0	

Note that this is only a recommendation. To measure for the correct size of ball:

With the mouth as wide open as possible, hold the diagram against the teeth so the "bottom of Top Teeth" line is on the bottom of the top teeth and then look to see which size ball is the largest size that will still fit between the teeth. If the bottom teeth are over a line that larger size is the recommended size.

If the size shows Petite (1.375") or smaller, consider going up one size. If the size shown is Super-Large (2.5") or larger consider going down one size. This takes into account the amount of give in the balls of that size. If the gagee may have any kind of minor Jaw problems reduce size by at least one size.

We do not recommend use at all if the person has known jaw problems.



Pleasure Paradox's Submissive Reaction Silicone Ball Gags

The Balls and Ball gags are made in Newport News, Virginia, USA.

The balls are made from a medical grade level* of silicone material that can be medically sterilized if desired. The leather straps are made from high-quality hand-selected leathers.

The gags are made for human use and are molded with a strap hole built in.

The balls currently come in 17 sizes (Diameters) and in colors** including: Red, Black, White, Blue, Pink, Purple, Yellow, Green, Clear, Pearl, Silver, & Gold.

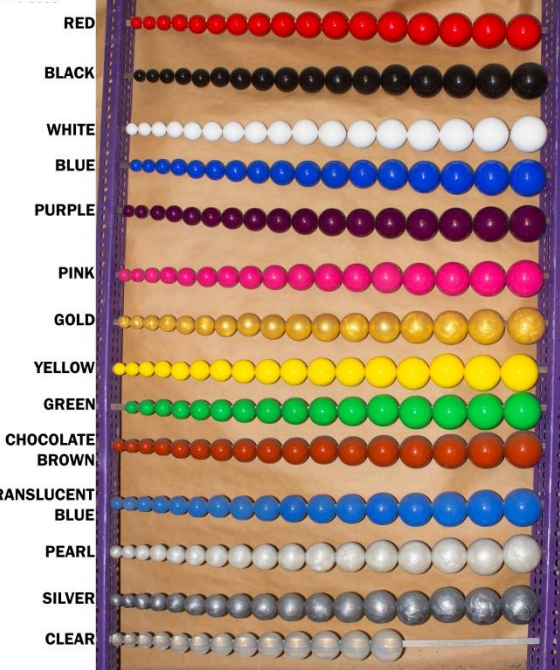
*They are not certified however as the FDA will not certify adult-oriented products.

** Not all colors available in all sizes.

(T)	Tiny	1.0" (25.4mm)
(U)	Ultra-Small	1.125" (28.575mm)
(V)	Extra-Small	1.25" (31.75mm)
(P)	Petite	1.375" (34.925mm)
(S)	Small	1.5" (38.1mm)
(C)	Compact	1.625" (41.275mm)
(R)	Medium -Small	1.75" (44.45mm)
(N)	Medium	1.875" (47.63mm)
(M)	Medium -Large	2.0" 50.8mm)
(L)	Large	2.125" (53.98mm)
(X)	Extra-Large	2.25" (57.15mm)
(Y)	2-XL	2.375" (60.325mm)
(Z)	Super-Large	2.5" (63.5mm)
(H)	Huge	2.625" (66.68mm)
(G)	Gigantic	2.75" (69.85mm)
(E)	Enormous	2.875" (73.025mm)
(F)	Goddess/WTF	3.0" (76.2mm)

www.pleasureparadox.com

Some of our available Ball sizes and colors.
From 1.0" to 3.0"



Several strap and buckle options are available. Custom straps can be made for your specific size.

The straps include black leather, or other leathers in several colors. We also have a Black PVC rubber and a White Nitrile food grade level material.



Buckles come in black, nickel, brass, and select other finishes; as well as locking and non-locking versions.

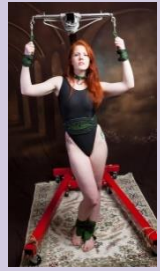
Also select cutouts on our leather tapered straps or cuffs are available via a custom order.



Pleasure Paradox doesn't make just ball gags, we also make Cuffs, Collars, Spreader Bars, and select other items.



Such as our Easy Wear Cuffs Designed for Suspension



Our products and services:

So whether it is a Ball Gag or a Fashion Collar, our products are made with quality in mind to last you many years and with styles to suite almost any taste.



The Submissive Reaction Silicone Balls From Pleasure Paradox and the buckles we use are also available individually and for wholesale to other vendors around the world:

We also have an Etsy shop at: pleasureparadox.etsy.com

And we are on Facebook: facebook.com/PleasureParadox-876136722507760

And FetLife: <https://fetlife.com/users/8336036>

Contact Us:

TPP Enterprises, LLC
324 57th St.
Newport News, VA, 23607-2050, USA
757-247-0016 (can NOT receive Texts - Landline)
sales@pleasureparadox.com

www.pleasureparadox.com